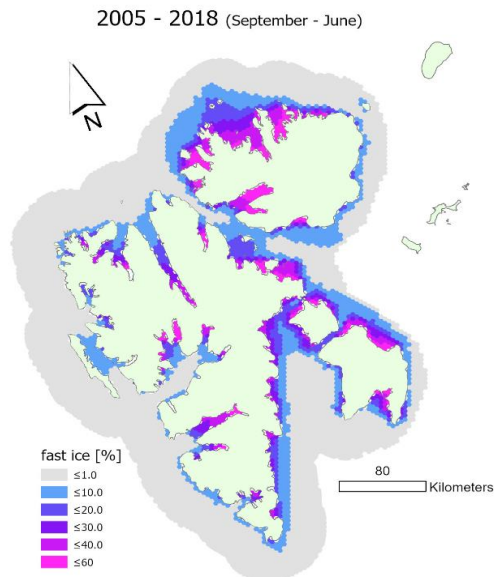


Interested in contributing? Take contact with one of the organizers below (sign up deadline 6<sup>th</sup> of January, 2020):

- \*Janne E. Søreide, UNIS, [jannes@unis.no](mailto:jannes@unis.no)
- \*Piotr Graczyk , NORCE, [pigr@norceresearch.no](mailto:pigr@norceresearch.no)
- \*Guttorm Christensen, Akvaplan-niva, Guttorm Christensen  
[guttorm.christensen@akvaplan.niva.no](mailto:guttorm.christensen@akvaplan.niva.no)
- \*Jan Marcin Weslawski, Institute of Oceanology Polish Academy of Sciences , ([weslaw@iopan.gda.pl](mailto:weslaw@iopan.gda.pl))
- \*Denis Moiseev, Murmansk Marine Biological Institute  
[Denis\\_Moiseev@mmbi.info](mailto:Denis_Moiseev@mmbi.info)



**Fig. 2** Fast ice in Svalbard has strongly decreased the last 30 years; on average from 5 months sea ice duration to only 1 month. Above a new estimate of # days of fast ice in Svalbard in the period 2005-2018 (Jacek Urbański, unpubl.)



Longyearbyen,  
February 2018

# Sustainable Svalbard Coasts

Workshop for  
managers, stakeholders and scientists  
18-20 February 2020

Where: University Centre in Svalbard (UNIS)  
Longyearbyen

TerrACE



## ***Setting the scene***

Svalbard is an archipelago with extensive coast lines. Less sea ice, increased coastal erosion, sediment loads and increased human activities will physically change the nearshore habitats and fjords and, thus, the biodiversity and productivity of these coastal ecosystems.

Now there is a strong need for synthesizing existing data to obtain a current status and identify major knowledge gaps to be able to predict future consequences, challenges and opportunities in Svalbard coastal waters.



Alkehornet ©M. Andreassen

## **Main goal**

Develop a long term multi-disciplinary monitoring plan of Svalbard coasts that has direct and relevant application for settlements, government decision makers, tourist business and other users.

## **Secondary objectives**

- Increase existing and initiate new cooperation to synthesize current knowledge
- Improve coordination of long term, multi-disciplinary monitoring of Svalbard coastal areas.
- Establish a Svalbard Coastal Expert Group of scientists, managers and stakeholders to ensure that knowledge is communicated